



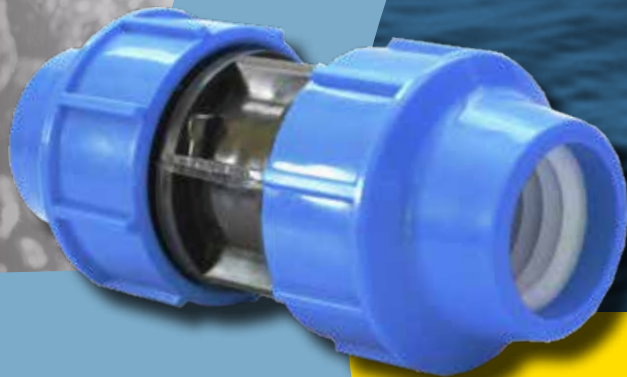
# GOLD MEDAL

QUALITY COMPRESSION FITTINGS



**EXTRA  
GRIP**

**PERFECT  
SEAL**



**PROVEN  
DURABILITY**

**[GOLDMEDALCOMPRESSION.COM](http://GOLDMEDALCOMPRESSION.COM)**

## ELBOW

PN 16



ITEM CODE	METRIC mm
105/0020	20
105/0025	25
105/0032	32
105/0040	40
105/0050	50
105/0063	63
105/0075	75
105/0090	90
105/0110	110

## ELBOW MALE

PN 16



ITEM CODE	METRIC mm x BSP	ITEM CODE	METRIC mm x BSP
106/0020x0015	20 x 1/2"	106/0050x0032	50 x 1 1/4"
106/0020x0020	20 x 3/4"	106/0050x0040	50 x 1 1/2"
106/0025x0015	25 x 1/2"	106/0050x0050	50 x 2"
106/0025x0020	25 x 3/4"	106/0063x0040	63 x 1 1/2"
106/0025x0025	25 x 1"	106/0063x0050	63 x 2"
106/0032x0015	32 x 1/2"	106/0063x0065	63 x 2 1/2"
106/0032x0020	32 x 3/4"	106/0075x0065	75 x 2 1/2"
106/0032x0025	32 x 1"	106/0075x0080	75 x 3"
106/0032x0032	32 x 1 1/4"	106/0090x0080	90 x 3"
106/0040x0025	40 x 1"	106/0090x0100	90 x 4"
106/0040x0032	40 x 1 1/4"	106/0110x0100	110 x 4"
106/0040x0040	40 x 1 1/2"		

## ELBOW FEMALE

PN 16



ITEM CODE	METRIC mm x BSP	ITEM CODE	METRIC mm x BSP	ITEM CODE	METRIC mm x BSP
107/0020x0015	20 x 1/2"	107/0040x0020	40 x 3/4"	107/0063x0065	63 x 2 1/2"
107/0020x0020	20 x 3/4"	107/0040x0025	40 x 1"	107/0075x0050	75 x 2"
107/0025x0015	25 x 1/2"	107/0040x0032	40 x 1 1/4"	107/0075x0065	75 x 2 1/2"
107/0025x0020	25 x 3/4"	107/0040x0040	40 x 1 1/2"	107/0075x0080	75 x 3"
107/0025x0025	25 x 1"	107/0050x0032	50 x 1 1/4"	107/0090x0080	90 x 3"
107/0032x0015	32 x 1/2"	107/0050x0040	50 x 1 1/2"	107/0090x0100	90 x 4"
107/0032x0020	32 x 3/4"	107/0050x0050	50 x 2"	107/0110x0080	110 x 3"
107/0032x0025	32 x 1"	107/0063x0040	63 x 1 1/2"	107/0110x0100	110 x 4"
107/0032x0032	32 x 1 1/4"	107/0063x0050	63 x 2"		

## TEE

PN 16



ITEM CODE	METRIC mm
108/0020	20
108/0025	25
108/0032	32
108/0040	40
108/0050	50
108/0063	63
108/0075	75
108/0090	90
108/0110	110

## TEE MALE

PN 16



ITEM CODE	METRIC mm x BSP	ITEM CODE	METRIC mm x BSP
109/0020x0015	20 x 1/2"	109/0050x0032	50 x 1 1/4"
109/0020x0020	20 x 3/4"	109/0050x0040	50 x 1 1/2"
109/0025x0015	25 x 1/2"	109/0050x0050	50 x 2"
109/0025x0020	25 x 3/4"	109/0063x0040	63 x 1 1/2"
109/0025x0025	25 x 1"	109/0063x0050	63 x 2"
109/0032x0015	32 x 1/2"	109/0063x0065	63 x 2 1/2"
109/0032x0020	32 x 3/4"	109/0075x0065	75 x 2 1/2"
109/0032x0025	32 x 1"	109/0075x0080	75 x 3"
109/0032x0032	32 x 1 1/4"	109/0090x0080	90 x 3"
109/0040x0025	40 x 1"	109/0090x0100	90 x 4"
109/0040x0032	40 x 1 1/4"	109/0110x0100	110 x 4"
109/0040x0040	40 x 1 1/2"		

## TEE FEMALE

PN 16



ITEM CODE	METRIC mm x BSP	ITEM CODE	METRIC mm x BSP	ITEM CODE	METRIC mm x BSP
110/0020x0015	20 x 1/2"	110/0040x0032	40 x 1 1/4"	110/0075x0050	75 x 2"
110/0020x0020	20 x 3/4"	110/0040x0040	40 x 1 1/2"	110/0075x0065	75 x 2 1/2"
110/0025x0015	25 x 1/2"	110/0050x0015	50 x 1/2"	110/0075x0080	75 x 3"
110/0025x0020	25 x 3/4"	110/0050x0032	50 x 1 1/4"	110/0090x0065	90 x 2 1/2"
110/0025x0025	25 x 1"	110/0050x0040	50 x 1 1/2"	110/0090x0080	90 x 3"
110/0032x0015	32 x 1/2"	110/0050x0050	50 x 2"	110/0090x0100	90 x 4"
110/0032x0020	32 x 3/4"	110/0063x0032	63 x 1 1/4"	110/0110x0080	110 x 3"
110/0032x0025	32 x 1"	110/0063x0040	63 x 1 1/2"	110/0110x0100	110 x 4"
110/0032x0032	32 x 1 1/4"	110/0063x0050	63 x 2"		
110/0040x0025	40 x 1"	110/0063x0065	63 x 2 1/2"		

### TEE REDUCING

PN 16



ITEM CODE	METRIC mm	ITEM CODE	METRIC mm
113/0025x0020	25 × 20	113/0063x0025	63 × 25
113/0032x0020	32 × 20	113/0063x0032	63 × 32
113/0032x0025	32 × 25	113/0063x0040	63 × 40
113/0040x0025	40 × 25	113/0063x0050	63 × 50
113/0040x0032	40 × 32	113/0075x0063	75 × 63
113/0050x0025	50 × 25	113/0090x0063	90 × 63
113/0050x0032	50 × 32	113/0090x0075	90 × 75
113/0050x0040	50 × 40	113/0110x0090	110 × 90

### END CAP

PN 16



ITEM CODE	METRIC mm
104/0020	20
104/0025	25
104/0032	32
104/0040	40
104/0050	50
104/0063	63
104/0075	75
104/0090	90
104/0110	110

### COUPLING

PN 16



ITEM CODE	METRIC mm
100/0020	20
100/0025	25
100/0032	32
100/0040	40
100/0050	50
100/0063	63
100/0075	75
100/0090	90
100/0110	110

### COUPLING REDUCING

PN 16



ITEM CODE	METRIC mm	ITEM CODE	METRIC mm
101/0025x0020	25 × 20	101/0063x0032	63 × 32
101/0032x0020	32 × 20	101/0063x0040	63 × 40
101/0032x0025	32 × 25	101/0063x0050	63 × 50
101/0040x0025	40 × 25	101/0075x0050	75 × 50
101/0040x0032	40 × 32	101/0075x0063	75 × 63
101/0050x0025	50 × 25	101/0090x0063	90 × 63
101/0050x0032	50 × 32	101/0090x0075	90 × 75
101/0050x0040	50 × 40	101/0110x0090	110 × 90
101/0063x0025	63 × 25		

### ADAPTOR MALE

PN 16



ITEM CODE	METRIC mm x BSP	ITEM CODE	METRIC mm x BSP	ITEM CODE	METRIC mm x BSP
102/0020x0015	20 x 1/2"	102/0040x0032	40 x 1 1/4"	102/0075x0050	75 x 2"
102/0020x0020	20 x 3/4"	102/0040x0040	40 x 1 1/2"	102/0075x0065	75 x 2 1/2"
102/0020x0025	20 x 1"	102/0040x0050	40 x 2"	102/0075x0080	75 x 3"
102/0025x0015	25 x 1/2"	102/0050x0025	50 x 1"	102/0090x0050	90 x 2"
102/0025x0020	25 x 3/4"	102/0050x0032	50 x 1 1/4"	102/0090x0065	90 x 2 1/2"
102/0025x0025	25 x 1"	102/0050x0040	50 x 1 1/2"	102/0090x0080	90 x 3"
102/0032x0015	32 x 1/2"	102/0050x0050	50 x 2"	102/0090x0100	90 x 4"
102/0032x0020	32 x 3/4"	102/0063x0032	63 x 1 1/4"	102/0110x0050	110 x 2"
102/0032x0025	32 x 1"	102/0063x0040	63 x 1 1/2"	102/0110x0080	110 x 3"
102/0032x0032	32 x 1 1/4"	102/0063x0050	63 x 2"	102/0110x0100	110 x 4"
102/0040x0025	40 x 1"	102/0063x0065	63 x 2 1/2"		

### ADAPTOR FEMALE

PN 16



ITEM CODE	METRIC mm x BSP	ITEM CODE	METRIC mm x BSP	ITEM CODE	METRIC mm x BSP
103/0020x0015	20 x 1/2"	103/0040x0025	40 x 1"	103/0075x0050	75 x 2"
103/0020x0020	20 x 3/4"	103/0040x0032	40 x 1 1/4"	103/0075x0065	75 x 2 1/2"
103/0020x0025	20 x 1"	103/0040x0040	40 x 1 1/2"	103/0075x0080	75 x 3"
103/0025x0015	25 x 1/2"	103/0050x0032	50 x 1 1/4"	103/0090x0050	90 x 2"
103/0025x0020	25 x 3/4"	103/0050x0040	50 x 1 1/2"	103/0090x0065	90 x 2 1/2"
103/0025x0025	25 x 1"	103/0050x0050	50 x 2"	103/0090x0080	90 x 3"
103/0032x0015	32 x 1/2"	103/0063x0032	63 x 1 1/4"	103/0090x0100	90 x 4"
103/0032x0020	32 x 3/4"	103/0063x0040	63 x 1 1/2"	103/0110x0080	110 x 3"
103/0032x0025	32 x 1"	103/0063x0050	63 x 2"	103/0110x0100	110 x 4"
103/0032x0032	32 x 1 1/4"	103/0063x0065	63 x 2 1/2"		



### DOUBLE UNION BALL VALVE

PN 16



ITEM CODE	METRIC mm
115/0020	20
115/0025	25
115/0032	32
115/0040	40
115/0050	50
115/0063	63

### MALE SINGLE UNION BALL VALVE

PN 16



ITEM CODE	METRIC mm x BSP
122/0020x0015	20 x 15
122/0025x0020	25 x 20
122/0032x0025	32 x 25
122/0040x0032	40 x 32
122/0050x0040	50 x 40
122/0063x0050	63 x 50

### FEMALE SINGLE UNION BALL VALVE

PN 16



ITEM CODE	METRIC mm x BSP
121/0020x0015	20 x 1/2"
121/0025x0020	25 x 3/4"
121/0032x0025	32 x 1"
121/0040x0032	40 x 1 1/4"
121/0050x0040	50 x 1 1/2"
121/0063x0050	63 x 2"

### CLAMP SADDLE WITHOUT REINFORCING RING

PN 6



ITEM CODE	METRIC mm x BSP
112/0025x0015	25 x 1/2"
112/0025x0020	25 x 3/4"
112/0032x0015	32 x 1/2"
112/0032x0020	32 x 3/4"
112/0032x0025	32 x 1"
112/0040x0015	40 x 1/2"
112/0040x0020	40 x 3/4"
112/0040x0025	40 x 1"
112/0050x0015	50 x 1/2"
112/0050x0020	50 x 3/4"
112/0050x0025	50 x 1"
112/0050x0032	50 x 1 1/4"
112/0063x0015	63 x 1/2"
112/0063x0020	63 x 3/4"
112/0063x0025	63 x 1"
112/0063x0032	63 x 1 1/4"
112/0063x0040	63 x 1 1/2"
112/0075x0015	75 x 1/2"
112/0075x0020	75 x 3/4"
112/0075x0025	75 x 1"
112/0075x0032	75 x 1 1/4"
112/0075x0040	75 x 1 1/2"
112/0075x0050	75 x 2"
112/0090x0015	90 x 1/2"
112/0090x0020	90 x 3/4"
112/0090x0025	90 x 1"
112/0090x0032	90 x 1 1/4"
112/0090x0040	90 x 1 1/2"
112/0090x0050	90 x 2"
112/0110x0015	110 x 1/2"
112/0110x0020	110 x 3/4"
112/0110x0025	110 x 1"
112/0110x0032	110 x 1 1/4"
112/0110x0040	110 x 1 1/2"
112/0110x0050	110 x 2"
112/0125x0015	125 x 1/2"
112/0125x0020	125 x 3/4"
112/0125x0025	125 x 1"
112/0125x0032	125 x 1 1/4"
112/0125x0040	125 x 1 1/2"
112/0125x0050	125 x 2"
112/0125x0080	125 x 3"
112/0160x0025	160 x 1"
112/0160x0050	160 x 2"
112/0200x0050	200 x 2"

### CLAMP SADDLE WITH REINFORCING RING

PN 10



ITEM CODE	METRIC mm x BSP
111/0025x0015	25 x 1/2"
111/0025x0020	25 x 3/4"
111/0032x0015	32 x 1/2"
111/0032x0020	32 x 3/4"
111/0032x0025	32 x 1"
111/0040x0015	40 x 1/2"
111/0040x0020	40 x 3/4"
111/0040x0025	40 x 1"
111/0050x0015	50 x 1/2"
111/0050x0020	50 x 3/4"
111/0050x0025	50 x 1"
111/0050x0032	50 x 1 1/4"
111/0063x0015	63 x 1/2"
111/0063x0020	63 x 3/4"
111/0063x0025	63 x 1"
111/0063x0032	63 x 1 1/4"
111/0063x0040	63 x 1 1/2"
111/0075x0015	75 x 1/2"
111/0075x0020	75 x 3/4"
111/0075x0025	75 x 1"
111/0075x0032	75 x 1 1/4"
111/0075x0040	75 x 1 1/2"
111/0075x0050	75 x 2"
111/0090x0015	90 x 1/2"
111/0090x0020	90 x 3/4"
111/0090x0025	90 x 1"
111/0090x0032	90 x 1 1/4"
111/0090x0040	90 x 1 1/2"
111/0090x0050	90 x 2"
111/0110x0015	110 x 1/2"
111/0110x0020	110 x 3/4"
111/0110x0025	110 x 1"
111/0110x0032	110 x 1 1/4"
111/0110x0040	110 x 1 1/2"
111/0110x0050	110 x 2"
111/0125x0015	125 x 1/2"
111/0125x0020	125 x 3/4"
111/0125x0025	125 x 1"
111/0125x0032	125 x 1 1/4"
111/0125x0040	125 x 1 1/2"
111/0125x0050	125 x 2"
111/0125x0080	125 x 3"
111/0160x0025	160 x 1"
111/0160x0050	160 x 2"
111/0200x0050	200 x 2"

### CLAMP SADDLE WITH REINFORCING RING PN16

PN 16



ITEM CODE	METRIC mm x BSP
114/0020x0015	20 x 1/2"
114/0025x0015	25 x 1/2"
114/0025x0020	25 x 3/4"
114/0032x0020	32 x 3/4"
114/0040x0015	40 x 1/2"
114/0040x0020	40 x 3/4"
114/0040x0025	40 x 1"
114/0050x0015	50 x 1/2"
114/0050x0020	50 x 3/4"
114/0050x0025	50 x 1"
114/0063x0015	63 x 1/2"
114/0063x0020	63 x 3/4"
114/0063x0025	63 x 1"
114/0063x0032	63 x 1 1/4"
114/0063x0040	63 x 1 1/2"
114/0075x0015	75 x 1/2"
114/0075x0020	75 x 3/4"
114/0075x0025	75 x 1"
114/0075x0032	75 x 1 1/4"
114/0075x0040	75 x 1 1/2"
114/0075x0050	75 x 2"
114/0090x0015	90 x 1/2"
114/0090x0020	90 x 3/4"
114/0090x0025	90 x 1"
114/0090x0032	90 x 1 1/4"
114/0090x0040	90 x 1 1/2"
114/0090x0050	90 x 2"
114/0110x0015	110 x 1/2"
114/0110x0020	110 x 3/4"
114/0110x0025	110 x 1"
114/0110x0032	110 x 1 1/4"
114/0110x0040	110 x 1 1/2"
114/0110x0050	110 x 2"

### COMPRESSION FLANGE ADAPTOR

PN 10



ITEM CODE	METRIC mm
120/0040x0040	40 x 40
120/0050x0040	50 x 40
120/0050x0050	50 x 50
120/0063x0050	63 x 50
120/0063x0065	63 x 65
120/0075x0065	75 x 65
120/0075x0080	75 x 80
120/0090x0080	90 x 80
120/0090x0100	90 x 100
120/0110x0100	110 x 100

